

IndexPro

A n E P C I C o m p a n y

Engineering Procurement Construction (EPC)

Operation & Maintenance

Provision of Technical Manpower

Asset Integrity Services

Vessel Support Services





“We are committed to delivering technically challenging mega-projects safely, on time, on budget to the highest standard of quality.”

IndexPro

An E P C I Company

VISION STATEMENT

We aim to provide reliable and qualitative services to the Nigerian energy industry.



MISSION STATEMENT

To be Nigeria's best Engineering, Procurement and Construction Company in the energy sector. We will achieve this by:

- ⊙ *Leading the industry in HSE, performance and environmental stewardship*
- ⊙ *Developing a sustainable and diverse business*
- ⊙ *Attracting and retaining smart, flexible, and adaptable people*
- ⊙ *Adapting to changing markets and consistently delivering as sold to our customers*



ABOUT INDEXPRO

IndexPro International Services Limited is registered in Nigeria and located our representative offices in Lagos, Port-Harcourt, Rivers State, and Eket, Akwa Ibom State of Nigeria to support Oil and Gas Business in Nigeria and the West African Sub-region, providing maximum local resources deployment and also to ensure accessibility and quick response to EPC needs of most Oil and Gas operators in Nigeria with the most efficient cost and timely delivery. We also have our International office in Houston TX, USA.

We are a company of choice to many major operators and assets owners in Nigeria, with a track record consistently delivering successful projects. IndexPro delivers engineering solutions ranging from conceptual studies to FEED, detailed engineering design and follow-on.

IndexPro Construction and Engineering Teams have robust diversified experience in fabrication and installations on topside and floating vessels. We deliver sea fastening operations on vessels and fabrication and installation aids for deep water wellhead installation programs.


IndexPro delivers a complete range of procurement solutions, We cover both fixed platforms, floating and sub-sea production systems. We have executed successful materials delivery project for our clients on major projects.

IndexPro has extensive offshore operation and maintenance experience, deploying some of the industry's most experience personnel with over 7 years in running the operation of facilities including FPSOs, FSOs, Flow Stations and Offshore Platforms.



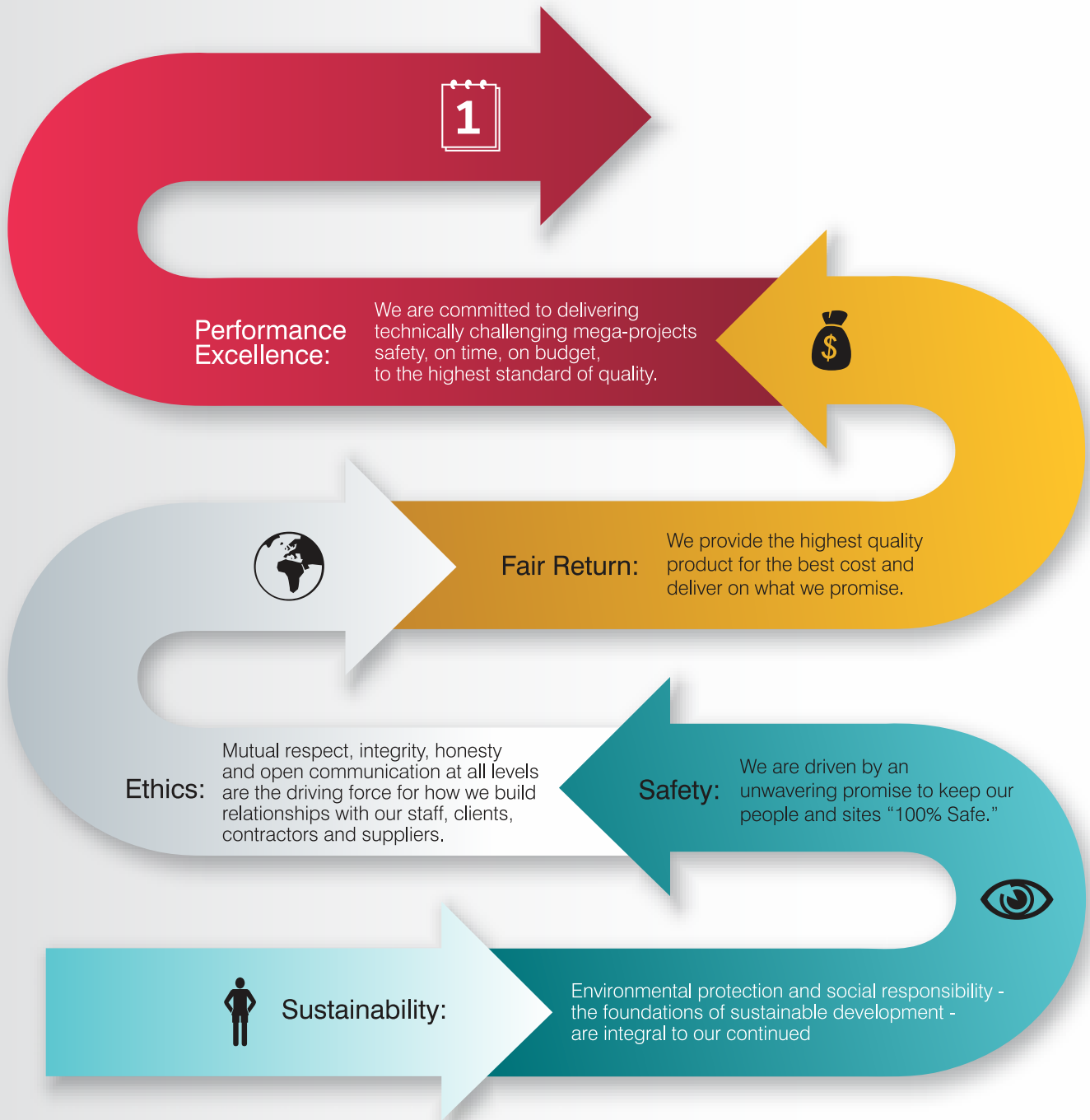
The logo for IndexPro, featuring the company name in white text on a teal rectangular background.

An E P C I Company

A large circular photograph of an offshore oil rig in the ocean. A flare is active, emitting a bright yellow and orange flame with a thick plume of dark smoke rising into the sky. The rig's complex steel structure is visible, including a yellow-painted walkway in the foreground. The sea is a deep blue, and the sky is clear.

*“ We aim to provide
reliable and qualitative services
to Nigerian energy industry. ”*

CORE VALUES



Operational Philosophy



SAFETY

We are committed to providing a safe and healthy work place for our employees and partners, ensuring operations are carried out in the manner that protect personnel, the environment and the host communities.

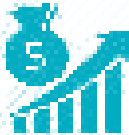
01



QUALITY

We carefully design every process to yield the highest organizational excellences and greatest client satisfaction. Quality is carefully contained in our culture and it's in the fabric of our organization.

02



COST EFFECTIVENESS

We carefully design every process to yield the highest organizational excellences and greatest client satisfaction. Quality is carefully contained in our culture and it's in the fabric of our organization.

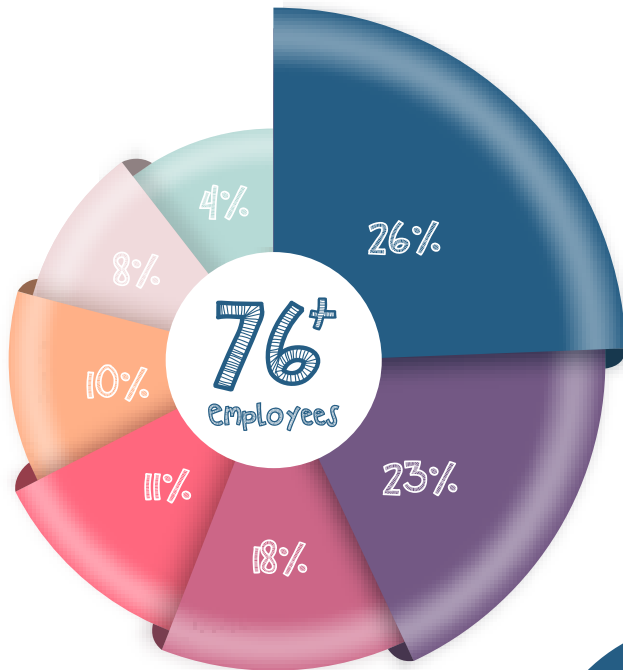
03



LOCAL CONTENT DEVELOPMENT

Our collective corporate strategies is to systematically accelerate the transfer of technology, engineering experience, and specialized know-how from our expatriates and foreign technical partners to indigenous nationals.

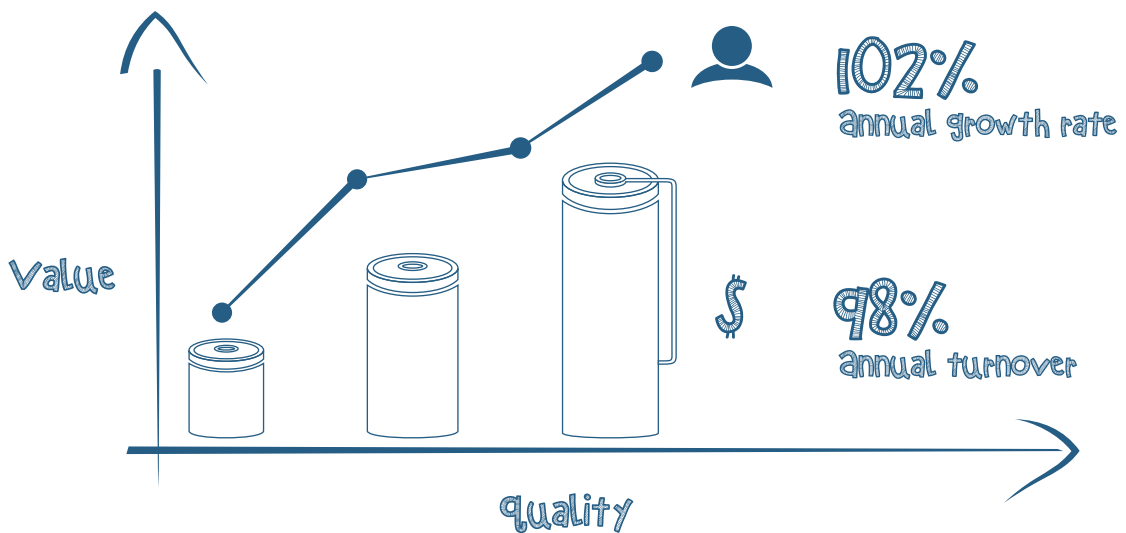
04



Employee distribution

- Design & Engineering
- Corporate Services
- Construction Management
- Project Management Office
- Cost & Contracts
- Finance & Accounts
- Human Resource

* Corporate Services encompasses our Strategy, Marketing & Communication, Business Development, IT and Administrative Operations.





Services

- ☑ Engineering Procurement Construction (EPC)
- ☑ Operation & Maintenance
- ☑ Provision of Technical Manpower
- ☑ Asset Integrity Services
- ☑ Vessel Support Services





○ **Multi-discipline Engineering Solutions to cover your asset life-cycle**

INDEXPRO brings vast process plants experience to your project. Our process engineers and project managers average more than 20 years in the Oil and Gas process industry, with extensive knowledge of all project execution.

Our designs are backed by a strong support team, proven work processes and cutting edge Integrated Engineering Design tools. From small brownfield modification through conventional offshore Greenfield project to sub-sea field development, INDEXPRO capabilities extend through the asset life-cycle.



○ **Conceptual Engineering**

Our team focuses on functional requirements, systematic engineering and decision quality process during feasibility study by studying all project stakeholder perspectives and reviewing economic return.

○ **Front End Engineering Design**

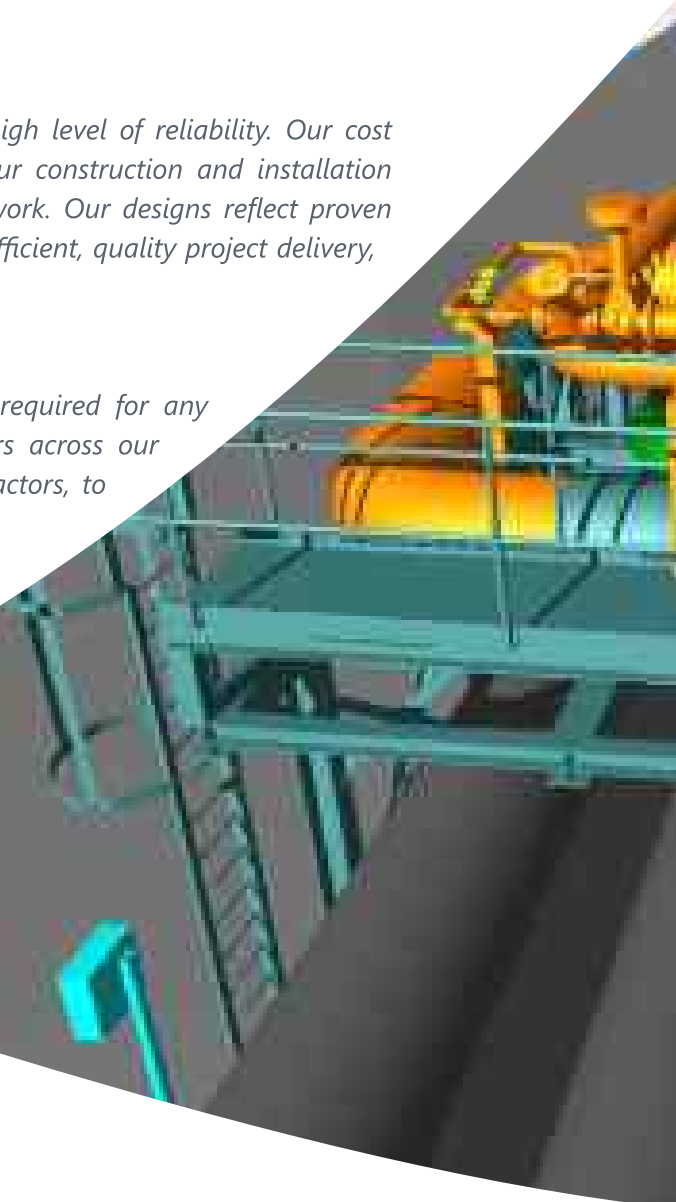
Our FEED solutions provide certainty of delivery and a high level of reliability. Our cost estimates are based on legacy and market data from our construction and installation experience as well as from procurement and vendor network. Our designs reflect proven construction and installation practices to ensure reliable, efficient, quality project delivery, lower costs, and faster FEEDs.

○ **Detail Design**

We are experts at carrying out modeling and analysis required for any installation methodology. We work closely with engineers across our marine and fabrication teams, as well as specialist contractors, to enable fully engineered installation solutions.

○ **Installation Engineering**

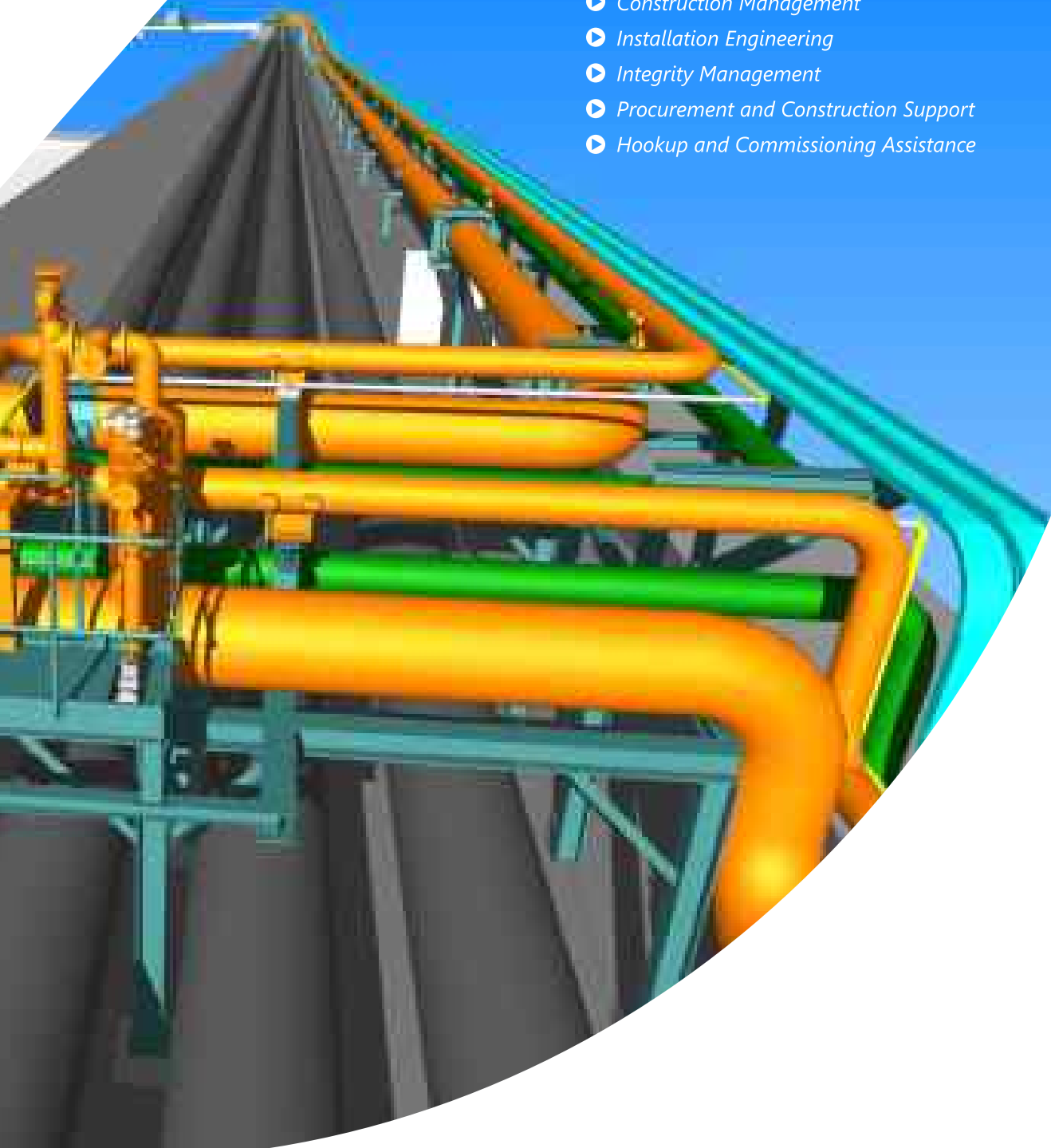
We draw on several years of experience & knowledge of constructability and best practices across multiple-disciplined design teams.





Engineering Capabilities

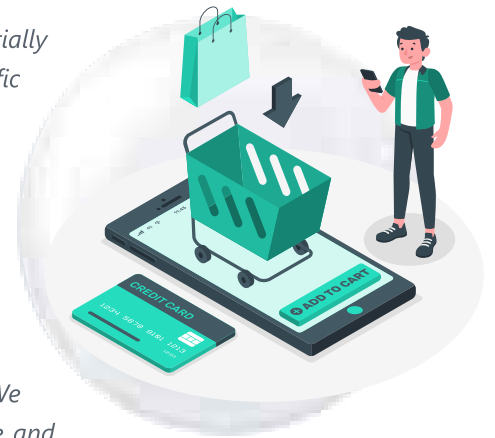
- ▶ *Project Management & Administration*
- ▶ *Conceptual Studies*
- ▶ *Front End Engineering Design (FEED)*
- ▶ *Detailed Engineering Design*
- ▶ *Construction Management*
- ▶ *Installation Engineering*
- ▶ *Integrity Management*
- ▶ *Procurement and Construction Support*
- ▶ *Hookup and Commissioning Assistance*





- *INDEXPRO delivers proven procurement strategies and solutions to substantially reduce supply chain costs and deliver quality materials that meet client's specific requirements on schedule. We have longstanding global alliance and rich network of Original Equipment Manufacturers (OEM's), authorized distributors of oilfield equipment, global buying houses, reputable third party quality inspectors and global freight forwarders. Our team has deep experience and understanding of local and international sourcing market and supply chain management.*

With a track record of several successful project materials delivery for our clients, INDEXPRO is a leader in providing turnkey procurement solutions. We carefully select vendors and suppliers who share our passion for excellence and strive to add value to our projects with a joint focus on quality, schedule, and price.



- **Global Strategic Sourcing**

Through rich networks and global alliances, INDEXPRO's teams of qualified buyers are able to source any material required by our clients from the right and trusted sources. We carefully select vendors and suppliers who share our passion for excellence and add value to our projects with a combination of right quality, optimal schedule, and best price.

- **Global Inspection and Expediting Services**

Our inspectors and expeditors work closely with suppliers to verify equipment and materials conform to clients' specifications and quality standards. INDEXPRO's inspectors witness key activities during equipment manufacturing to verify conformance to specifications and our expediting activities cover the entire process. Our Inspection Services team ensures quality with effective inspection task planning, efficient testing and reporting methods.

We organize, plan, execute, control and verify the quality of the work in accordance with clients requirements and INDEXPRO Quality Management System while continuously taking action to identify, report, correct and prevent nonconformity.

- **Materials Management**

- **Supply Chain Management**

- **Warehousing and Logistics Optimization**





Procurement Capabilities

- ▶ *Global Strategic Sourcing*
- ▶ *Materials Management*
- ▶ *Inspection Services (QA & QC)*
- ▶ *Supply Chain and Subcontract Management*
- ▶ *Warehousing and Logistics Optimization*





- *INDEXPRO has the capabilities to deliver excellent construction and installation management for our clients, enhancing the quality and worth of projects. Our services covers complete construction & installation works for Onshore and Offshore projects, production units, turn-key installations from design, Subsea construction etc. Knowing fully well that the end product in construction and installation depends on the construction practices, quality of materials, safety and quality control in the construction process.*

The construction services offered by INDEXPRO are directed at optimizing the aptness, quality and worth of construction projects. Our construction management team focuses on providing principal practices for construction methods, QHSE, project management, subcontractor management and other issues affecting construction projects.



○ **Fabrication**

The INDEXPRO Port Harcourt Fabrication Base is located at KM 21 ph/Aba Express Way (Beside Stanbic IBTC Bank Iriebe) Port Harcourt, Rivers State, Nigeria. It is 100% Nigerian owned company and has an approximate land area of 8 hectares facing the major Port Harcourt Aba Expressway and provides access to all the major airports and Onne Seaport.

We have the capabilities to deliver 10,000 – 20,000 metric Tons of fabricated products per year with our state-of-the-art fabrication facilities. Our fabrication facility is one of the most competitive in Africa with a 15,600 square meter of three major covered workshops, two (2) of which has the capacity to handle up to 28 meter width and 16 meter heights fully assembled structures.

Our facility is equipped with advanced production management systems, manufacturing technology and construction equipment making INDEXPRO the ideal construction service provider in the industry.

To complement our fabrication capabilities the facility also offers services such as shop drawings and detailing.

Our project management teams are skilled in leading and completing projects on time, within budget in accordance with the client's requirement in order to maximize customer satisfaction.





Construction Capabilities

- ▶ *Offshore structures (inclusive of Central Processing Platforms, Wellhead Platforms, Compression Modules, etc.)*
- ▶ *Offshore revamp and upgrades*
- ▶ *Offshore and Onshore maintenance programs*
- ▶ *Process piping systems*
- ▶ *Pressure vessels*
- ▶ *Onshore modules*
- ▶ *Complex modular structures*
- ▶ *FPSO components*
- ▶ *Subsea structures, manifolds, riser-bases*
- ▶ *Subsea spools and tie-in systems*
- ▶ *Complete subsea field installations, hook-up, pre-commissioning and commissioning*
- ▶ *Buoys*





- *INDEXPRO delivers fully integrated solutions for the offshore installation of oil and gas production facilities. We have extensive experience and expertise in hook-up and commissioning, offshore transportation and installation (T&I) of jackets and topsides, seabed intervention, subsea construction and subsea installation of umbilicals, risers and flowlines (SURF). In addition, we offer services to floating structures such as floating production, storage and offloading units (FPSOs) including mooring installation.*

Our focus is on field development, brownfield revamp/modification of fixed platforms, associated pipelines and deepwater floating systems. Our installation activities bring together a range of fields of expertise including collaboration with partners who are global leaders in offshore installation to create comprehensive, cost-effective solutions that are specifically tailored to meet your needs. Our global partnerships complement and extend INDEXPRO local capacity and capability and enable us to offer fully integrated solutions supported by in-house engineering, procurement, dedicated project management capabilities and fleets of various types of construction/installation vessels.

- **Hook-Up Services**

Our Hook-up services comprise the installation of modules on new platforms and the refurbishment of topsides of existing fixed and floating production facilities.

- **Offshore T&I**

In strategic alliance with foreign technical partners, INDEXPRO provides fully integrated transport and installation (T&I) solutions for fixed offshore oil and gas production structures in shallow waters. Our activities include seabed preparation, transport to the field including load-out from construction sites, lifting and launching jackets, installation of topsides and associated pipelines.

- **Integrated Subsea Construction & Installation**

We offer integrated services for subsea infield installation of spools, subsea structures, floating hoses, pipelines, power cables, and subsea infrastructure pipeline end manifolds (PLEM). We also offer inspection, repair and maintenance, and light construction work with divers and remotely operated vehicles (ROV's). Further, we can provide FPSO, mooring buoy and mooring system installation, platform and subsea structure decommissioning.

- **SURF**

We provide full range subsea services and hold strong EPCI (Engineering, Procurement, Construction, and Installation) expertise within the SURF (Subsea structures, Umbilicals, Risers, Flowlines) segment. Leveraging partners' high-end construction support vessels, we safely execute projects, which connect seabed wellhead infrastructures to surface facilities such as platforms and floating production systems.





Installation Capabilities

Our integrated installation solutions allow us to streamline processes and reduce interfaces, thereby savings costs and time, and reducing risks. We provide in-house engineering, procurement, project management as well as the following:

- ▶ *Hook-Up Services*
- ▶ *Offshore T&I*
- ▶ *Integrated Subsea Construction & Installation*
- ▶ *SURF*





- *Our team of IndexPro certified inspectors ensures the highest standards on all jobs. As a total integrated solutions provider, we offer comprehensive corrosion management solutions for onshore and offshore platforms, rigs and other oil and gas asset. We offer customized and comprehensive auditing, inspection, planning, execution and project management services. The company offers total corrosion management solutions for the marine and offshore industry.*



Corrosion Capabilities

- ▶ *Corrosion Audits / Inspections*
- ▶ *Surface Preparation and Painting*
- ▶ *Scaffolding Services*
- ▶ *Rope Access Services*
- ▶ *Provision of Skilled Personnel*
- ▶ *Supply of Equipment such as UHP Units, Air Compressors, Airless Spray Pumps, Etc.*



*We offer Comprehensive Corrosion
Management Solutions for onshore
and offshore Platforms/Rigs*





MANAGEMENT SYSTEM CERTIFICATE

Certificate No.
0000079694-MS-444-2015

Initial certification date
14 June 2015

Valid
14 June 2015 – 14 June 2018

This is to certify that the management system of:

INDEXPRO INTERNATIONAL SERVICES LIMITED

KM 21 ASA PHC EXPRESSWAY OYIBBO RIVERS STATE, Nigeria

has been found to conform to the Quality Management System standard:
ISO 9001:2015

This certificate is valid for the following scope:
**Procurement, construction, fabrication and mechanical installation for oil
and gas and other industries.**

Place and date:
Barnstaple, 10 June 2015



The IAF is a signatory to the ISO 18001

For the issuing office:
DNV GL - Business Assurance
Drammensgt. 1, 2008 OS, Barnstaple,
Netherlands


DNV GL
Management Representative



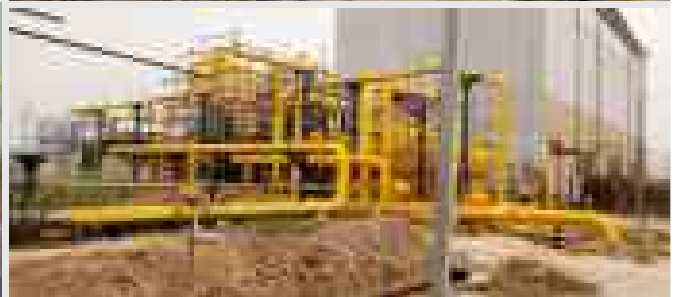
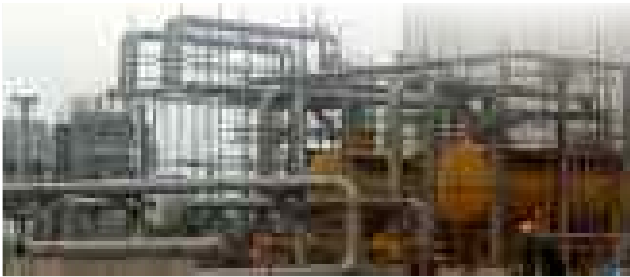
Use of facilities or resources as set out in the Certification Agreement may render this Certificate invalid.
For further information, please contact the Issuing Office, DNV GL, Barnstaple, Drammensgt. 1, 2008 OS, Netherlands.
www.dnvgl.com



PROJECTS EXECUTED

IndexPro

An EPCI Company



Piping Fabrication/Installation,
Gas Heater, Scrubber,
Valves Installation

TYPE OF CONTRACT ▶▶

GAS SCRUBBER & HEATING MECHANISM PROJECT FOR INEZ GLOBAL INVESTMENT LTD.

SCOPE OF WORK ▶▶

1. **ENGINEERING:** IFC drawing Review, Raise Technical Query if any, Prepared Shop Drawings, Weld Map Drawings and AS-Built Drawings
2. **PROCUREMENT:** Material Procurement, Inspection and verification
3. **FABRICATION:**
 - i) Project Management
 - ii) Fabrication of Fitted Members
 - iii) MPI Testing/Inspection, Blasting and Painting
 - iv) Completion and Commissioning
 - v) Documentation and Procedures

DURATION ▶▶ 220 Days

DATE: ▶▶ August 2021 -October 2022







PROJECTS EXECUTED

IndexPro

An EPCI Company



TYPE OF CONTRACT »

INSTALLATION OF AUTOMOBILE ASSEMBLY PLANT FOR MIMSHAC

SCOPE OF WORK »

1. **ENGINEERING:** IFC drawing Review, Raise Technical Query if any, Prepared Shop Drawings, Weld Map Drawings and AS-Built Drawings.
2. **PROCUREMENT:** Material Procurement, Inspection and verification
3. **FABRICATION:** i) Project Management ii) Project Management iii) Fabrication of Fitted Members
iv) MPI Testing/Inspection, Blasting and Painting
v) Completion and Commissioning vi) Documentation and Procedures

DURATION » 150 Days DATE: » April-September 2021



AUTOMOBILE ASSEMBLY PLANT INSTALLATION FOR MIMSHAC



PROJECTS EXECUTED

IndexPro

An EPCI Company



TYPE OF CONTRACT ▶▶

BOAT LANDING/SURFER LADDER

SCOPE OF WORK ▶▶

1. **ENGINEERING:** IFC drawing Review, Raise Technical Query if any, Prepared Shop Drawings, Weld Map Drawings and AS-Built Drawings
2. **PROCUREMENT:** Material Procurement, Inspection and verification
3. **FABRICATION:**
 - i) Project Management
 - ii) Fabrication of Fitted Members
 - iii) MPI Testing/Inspection, Blasting and Painting
 - iv) Completion and Commissioning
 - v) Documentation and Procedures

DURATION ▶▶ 14 Days

DATE: ▶▶ September 2022



TYPE OF CONTRACT ▶▶

MEZZ DECK GRILLAGE PROJECT

SCOPE OF WORK ▶▶

1. **ENGINEERING:** IFC drawing Review, Raise Technical Query if any, Prepared Shop Drawings, Weld Map Drawings and AS-Built Drawings
2. **PROCUREMENT:** Material Procurement, Inspection and verification
3. **FABRICATION:**
 - i) Project Management
 - ii) Pile Cap
 - iii) Fabrication of Fitted Members
 - iv) MPI Testing/Inspection, Blasting and Painting
 - v) Completion and Commissioning
 - vi) Documentation and Procedures

DURATION ▶▶ 30 Days

DATE: ▶▶ February 2023





PROJECTS EXECUTED

IndexPro

An EPCI Company



TYPE OF CONTRACT ▶▶

CONSTRUCTION OF DIESEL TANK FOUNDATION

SCOPE OF WORK ▶▶

1. **ENGINEERING:** IFC drawing Review, Raise Technical Query if any, Prepared Shop Drawings, Weld Map Drawings and AS-Built Drawings
2. **PROCUREMENT:** Material Procurement, Inspection and verification
3. **FABRICATION:**
 - i) Project Management
 - ii) Pile Cap
 - iii) Piling Rig in Otuokpoti
 - iv) Interlock Walkway
 - v) Piling Bridge Two, Ataba
 - vi) Completion and Commissioning
 - vii) Documentation and Procedures

DURATION ▶▶ 120 Days

DATE: ▶▶ June-July 2018





PROJECTS EXECUTED

IndexPro

An EPCI Company



NAME OF CLIENT »

Amazon Energy Ltd/AGIP

TYPE OF CONTRACT »

KWALE FLARE-DOWN PROJECT

SCOPE OF WORK »

1. **ENGINEERING:** IFC Drawing Review, Prepared shop drawings, Weld-map Drawings and AS-Built Drawings
2. **PROCUREMENT:** Material Procurement, Inspection and Verification
3. **FABRICATION:**
 - i) Project Management
 - ii) Fabrication of Fitted Members
 - ii) MPI Testing/Inspection, Blasting and Painting
 - iii) Completion and Commissioning
 - iv) Documentation and Procedures
 - v) Load Out

DURATION » 90 Days | DATE: » November 2019



TYPE OF CONTRACT»

KAA ATABA BRIDGE PROJECT

SCOPE OF WORK»

1. **ENGINEERING:** IFC drawing Review, Raise Technical Query if any, Prepared Shop Drawings, Weld Map Drawings and AS-Built Drawings
2. **PROCUREMENT:** Material Procurement, Inspection and verification
3. **FABRICATION:**
 - i) Project Management
 - ii) Pile Cap
 - iii) Piling Rig in Otuokpoti
 - iv) Interlock Walkway
 - v) Piling Bridge Two, Ataba
 - vi) Completion and Commissioning
 - vii) Documentation and Procedures

DURATION » 120 Days

DATE: » June-July 2018



PROJECTS EXECUTED

IndexPro

An EPCI Company



NAME OF CLIENT »

SPDC

TYPE OF CONTRACT »

**DOMGAS PROJECT (NTOROGU NAG 2)
GLYCOL SUMP TANK**

SCOPE OF WORK »

1. **ENGINEERING:** IFC Drawing Review, Prepared shop drawings, Weld-map Drawings and AS-Built Drawings
2. **PROCUREMENT:** Material Procurement, Inspection and Verification
3. **FABRICATION:** i) Project Management
ii) Fabrication of Fitted Members
iii) MPI Testing/Inspection, Blasting and Painting
iv) Completion and Commissioning
v) Documentation and Procedures
v) Load Out

DURATION » 90 Days | DATE: » August 2016



NAME OF CLIENT »
SPDC

TYPE OF CONTRACT »
AGBADA CLOSED DRAIN PROJECT

SCOPE OF WORK »

1. **ENGINEERING:** IFC drawing Review, Raise Technical Query if any, Prepared Shop Drawings, Weld Map Drawings and AS-Built Drawings
2. **PROCUREMENT:** Material Procurement, Inspection and verification
3. **FABRICATION:**
 - i) Project Management
 - ii) MPI Testing/Inspection, Blasting and Painting
 - iii) Completion and Commissioning
 - iv) Documentation and Procedures
 - v) Onskid Instrumentaion
 - vi) FAT
 - vdd) Load Out

DURATION » 120 Days

DATE: » June-July 2019



PROJECTS EXECUTED

IndexPro

An EPCI Company



NAME OF CLIENT »
**TOTAL UPSTREAM COMPANIES
IN NIGERIA**

TYPE OF CONTRACT »
COIL TUBING DEPLOYMENT

SCOPE OF WORK »

1. **ENGINEERING:** IFC Drawing Review, Prepared shop drawings, Weld-map Drawings and AS-Built Drawings
2. **PROCUREMENT:** Material Procurement, Inspection and Verification
3. **FABRICATION:**
 - i) Fabrication of Fit-Up and Dimensional Control
 - ii) Fabrication of Fitted Members
 - iii) MPI Testing/Inspection, Blasting and Painting
 - iv) Delivery to African Vision Vessel at Onne
 - v) Close-Out Documentation

DURATION » 7 Days | DATE: » March 2019



NAME OF CLIENT »
MARINE PLATFORMS LTD.

TYPE OF CONTRACT »
OVERBOARDING CHUTE

SCOPE OF WORK »»

1. **ENGINEERING:** IFC drawing Review, Raise Technical Query if any, Prepared Shop Drawings, Weld Map Drawings and AS-Built Drawings
2. **PROCUREMENT:** Material Procurement, Inspection and verification
3. **FABRICATION:**
 - i) Bending and Fit-Up of the Pipes
 - ii) Fabrication of the Fitted Members
 - iii) MPI Testing/Inspection, Blasting and Painting
 - iv) Delivery at INEZ and OIL FISH Vessels in Warri
 - v) Close-Out Documentation

DURATION » 12 Days | DATE: » January 2019



PROJECTS EXECUTED

IndexPro

An EPCI Company



NAME OF CLIENT »
MARINE PLATFORMS LTD.

TYPE OF CONTRACT »
**PCH INTERFACE TOWER
FOR AKPO LWI PROJECT**

SCOPE OF WORK »

1. **ENGINEERING:** IFC drawing Review, Raise Technical Query if any, Prepared Shop Drawings, Weld Map Drawings and AS-Built Drawings
2. **PROCUREMENT:** Material Procurement, Inspection and Verification
3. **FABRICATION:**
 - i) Fit-up and Dimensional Control
 - ii) Fabrication of the Fitted Members
 - iii) MPI Testing/Inspection, Blasting and Painting
 - iv) Delivery at MPL Yard-Onne
 - v) Close-Out Documentation

DURATION » 10 Days | DATE: » January 2019



NAME OF CLIENT »
CHEVRON NIGERIA LIMITED

TYPE OF CONTRACT »
SUBSEA UNDERBENDER

SCOPE OF WORK »

1. **ENGINEERING:** IFC Drawing Review, Technical Query if any, Prepared shop drawings, Weld-map Drawings and AS-Built Drawings
2. **PROCUREMENT:** Material procurement, Inspection and Verification
3. **FABRICATION:**
 - i) Fabrication of Subsea Underbender Chute and Members
 - ii) Fabrication of Underbender Foundation and Mud Mat
 - iii) MPI Testing/Inspection, Blasting and Painting
 - iv) Delivery at INEZ and OIL FISH Vessels at Warri
 - v) Close-Out Documentation

DURATION » 15 Days | DATE: » January 2019



PROJECTS EXECUTED

IndexPro

An EPCI Company



NAME OF CLIENT »
MARINE PLATFORMS LTD.

TYPE OF CONTRACT »
OVERBOARDING CHUTE

SCOPE OF WORK »

1. **ENGINEERING:** IFC drawing Review, Raise Technical Query if any, Prepared Shop Drawings, Weld Map Drawings and AS-Built Drawings
2. **PROCUREMENT:** Material Procurement, Inspection and verification
3. **FABRICATION:**
 - i) Bending and Fit-Up of the Pipes
 - ii) Fabrication of the Fitted Members
 - iii) MPI Testing/Inspection, Blasting and Painting
 - iv) Delivery at INEZ and OIL FISH Vessels in Warri
 - v) Close-Out Documentation

DURATION » **12 Days (Completed)**

DATE: » **January 2019**



NAME OF CLIENT»

Marine Platform/COOEC

TYPE OF CONTRACT»

**SBN BOUY AND MOORING PILE &
CHAIN INSTALLATION FABRICATION SUPPORT
(COOEC PROJECT)**

SCOPE OF WORK»

1. **ENGINEERING:** IFC Drawing Review, Prepared shop drawings, Weld-map Drawings and AS-Built Drawings
2. **PROCUREMENT:** Material Procurement, Inspection and Verification
3. **FABRICATION:**
 - i) Construction of Tow & Test Heads
 - ii) Fabrication of 6 Roller Boxes
 - iii) Fabrication of 6nos 20Te & 4nos 10Te PADEYE
 - iv) Fabrication 46nos Rollers
 - v) Procurement & Supply of Flanges for Tow & Test
 - vi) Barge Mobilization at RORO Jetty Phase 3
 - ii) MPI Testing/Inspection, Blasting and Painting
 - iii) Completion and Commissioning
 - iv) Documentation and Procedures
 - v) Load Out

LOCATION» Dangote RORO Jetty

DURATION» Completed

DATE» July 2020





PROJECTS EXECUTED

IndexPro

An EPCI Company



NAME OF CLIENT »
CHEVRON NIGERIA LIMITED

TYPE OF CONTRACT »
SUBSEA UNDERBENDER

SCOPE OF WORK »

1. **ENGINEERING:** IFC Drawing Review, Technical Query if any, Prepared shop drawings, Weld-map Drawings and AS-Built Drawings
2. **PROCUREMENT:** Material procurement, Inspection and Verification
3. **FABRICATION:** i) Fabrication of Subsea Underbender Chute and Members
ii) Fabrication of Underbender Foundation and Mud Mat
iii) MPI Testing/Inspection, Blasting and Painting
iv) Delivery at INEZ and OIL FISH Vessels at Warri
v) Close-Out Documentation

DURATION » 15 Days (Completed)

DATE: » January 2019



Project Title

Kwale Flare Down Gas Project



Scope of Work

Kwale Flare Down Gas Project-underground/Above Ground Piping Spools Prefabrication and Mechanical Installation-at Fab. Yard and Kwale Gas Palnt, Kwale Respectively.

Client

Nigerian Agip Oil Company (NAOC)/Amazon Energy Ltd.

Status

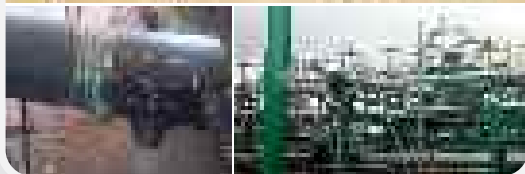
100% - Completed

Timeline

8 Months (Aug. 2018 - April 2019)

Project Title

Kwale Flare Down Gas Project Cont....



Scope of Work

KWALE FLARE DOWN GAS PROJECT-UNDERGROUND/ABOVE GROUND MECHANICAL INSTALLATION - AT KWALE GAS PALNT, KWALE:

- ATM Compressor Shelter installation in progress
- Erection of LP PSV Platform in progress
- Erection of ATM PSV Platform in progress
- 4" Drain Line Underground Piping Installation work on-going

Client

Nigerian Agip Oil Company (NAOC)/Amazon Energy Ltd.

Status

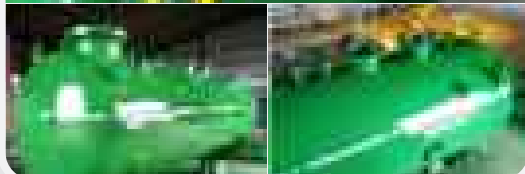
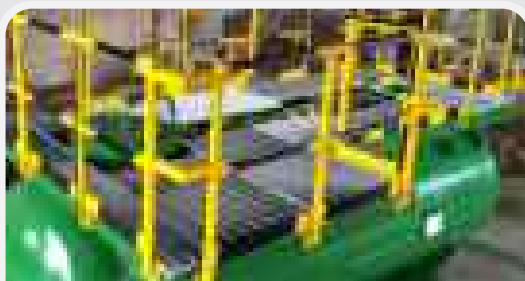
100% - Completed

Timeline

AUG. 2018-APR. 2019 (8 Months)

Project Title

AGBADA CLOSED DRAIN PROJECT-SCOPE OF WORKS



Scope of Work

1. ENGINEERING: IFC drawing Review, Raise Technical Query if any, Prepared Shop Drawings, Weld Map Drawings and AS-Built Drawings
2. PROCUREMENT: Material Procurement, Inspection and verification
3. FABRICATION: i) Project Management ii) MPI Testing/Inspection, Blasting and Painting iii) Completion and Commissioning iv) Documentation and Procedures v) Onskid Instrumentaion vi) FAT vii) Load Out

Client

Shell Petroleum Development Company (SPDC)/ HAZCON Nigeria Limited

Status

100% Completed

Timeline

June - July. 2019 (60 Days)



Project Title

VCM Sub-Sea Parking Stand, Lifting Yoke and Hang-off Collars



Scope of Work

1. Engineering (IFC Drawing Review, Prepared Show Drawings, Weld Mapping and As-Built.)
2. Material Procurement
3. Onshore Fabrication of the Sub-Sea VCM Parking Stand, Lifting Yoke and 4 No. Hang-off Collars. NDT Inspection, Padeye Pull Test, blasting, painting and delivery at Eko Support Base - Lagos

Client CEONA /Marine Platforms

Status 100% - Completed

Timeline 34 Days (August 2014)

Project Title

Stanchions, Spreader Bars and Concrete Mattress



Scope of Work

- 1) Engineering: (IFC Drawing Review, Raise Technical Query if any, Prepared Show Drawings, Weld Map Drawings, and As-Built Drawing.)
- 2) Procurement and Fabrication and load out to Brawal Jetty of Stanchion for Rover Nelson, and Jason 51, Concrete Mattress Deployment Frame and Spreader Bars,
- 3) Sea-fastening of 128 Nos. Stanchions on River Nelson and Jascon 55.

Client Sidel / Marine Platforms

Status 100% - Completed

Timeline 15 Days (March 2018)

Project Title

A Frame & Winch Sea- Fastening Grillage Refurbishment



Scope of Work

- Total Refurbishment:**
- (i) Load out from MPL base-Onne.
 - (ii) Refurbishment of A-Frame & WINCH Seafastening Grillage
 - (iii) Fabrication of 10No. Cruciform Plate
 - (iv) Blasting and Painting
 - (v) As-Built (vi) Close out Documentation
 - (vii) Delivery at MPL Yard - Onne

Client Marine Platforms

Status 100% - Completed

Timeline 15 Days (September 2014)





Project Title **Fabrication Of IUTA Lifting Frame**



Scope of Work

1. Engineering: (IFC Drawing Review, Raise Technical Query if any, Prepared Show Drawings, Weld Map Drawings, and As-Built Drawing).
2. Procurement: (Material Procurement, Inspection and Verification.
3. Onshore Fabrication: (Fabrication of IUTA Lifting Frame (ii) NDT Inspection, blasting and painting (iii) Delivery at Quay Side FOT-Onne, (iv) Close Documentation.

Client	CEONA /Marine Platforms
Status	100% - Completed
Timeline	7 Days (November 2014)

Project Title **Fabrication Of Boomrest, Crane Foundation & Crossover Platform**



Scope of Work

1. Engineering: (IFC Drawing Review, Raise Technical Query if any, Prepared Show Drawings, Weld Map Drawings, and As-Built Drawing).
2. Procurement: (Material Procurement, Inspection and Verification.
3. Onshore Fabrication: (i) Fabrication of Crane Foundation (ii) Crane Boom Rest Cross Over Platform and (iv) Crane Pedestal Reinforcement (v) NDT Inspection (vi) blasting and painting (vii) Delivery at Kidney Island Port Harcourt (ix) Close Documentation.

Client	Bumi Armada / Rostrum Oil & Gas
Status	100% - Completed
Timeline	29 Days (December 2014)

Project Title **Deck Strengthening Onboard the Normand Pacific Project**



Scope of Work

SOW include the following: key task; labour; materials; tools; facilities; personnel and consumables required to undertake the preparation; welding and finishing work for the list task below. (i) Deck Strengthening work (ii) On-deck Strengthening (iii) Under-deck Stiffening (iv) On deck Stiffening (v) Works management - Documentation, As-built Dossier, Supervision of welding personnel during works onboard, HSE management, Interface with the Normand Pacific Personnel and Logistics.

Client	CEONA / Marine Platforms Limited
Status	100% - Completed
Timeline	14 Days (October 2014)



Project Title

Installation Remote FO Monitoring



Scope of Work

- 1) Remove section of 6" FO cargo pipeline and carry fabrication to fit new flow meter which will be supplied by the equipment maker
- (2) Remove section of ½ inch fuel supply and return pipeline for port and starboard main engine, carry out fabrication of the pipeline and install new flow meters (1 on each fuel supply/ return line)
- (3) Remove section 3/8 inch fuel supply and return pipeline for auxiliary engine No 1 & 2, carry out fabrication of the pipeline and install new flow meters
- 4) Install electrical cabinet and cable and keep ready for termination which shall be carried out by the equipment supplier

Client THOME

Status 100% - Completed

Timeline 14 Days (October 2014)

Project Title

Modification of Surfer Landing/ Demob of Normard Pacific



Scope of Work

- 1) Engineering: (IFC Drawing Review, Raise Technical Query if any, Prepared Show Drawings, Weld Map Drawings.
- 2) Procurement: (Material Procurement, Inspection and Verification.
- 3) Key Task; labour; materials; tools; facilities; personnel and consumables required to undertake the preparation; welding and finishing work on the Surfer landing.
- 4) Works management -Documentation, As-built Dossier, Supervision of welding personnel during works onboard, HSE management, Interface with the Normard Pacific Personnel and Logistics.

Client SNEPCO / Marine Platforms / AGIP

Status 100% - Completed

Timeline 8 Days (October 2014)

Project Title

Mobilization Support at Sea Eagle



Scope of Work

- 1) Seafastening of Equipment, Containers and Structural Frame work.
- 2) Works management - Documentation, Material Control, tool, Consumables, Supervision of welding personnel during works onboard, HSE management, Interface with the Normard Pacific Personnel and Logistics.

Client SNEPCO/LADOL/Marine Platforms

Status 100% - Completed

Timeline 3 Days (October 2014)



Project Title

PP00011-ABO-12 Well Completion (Installation And Fabrication)



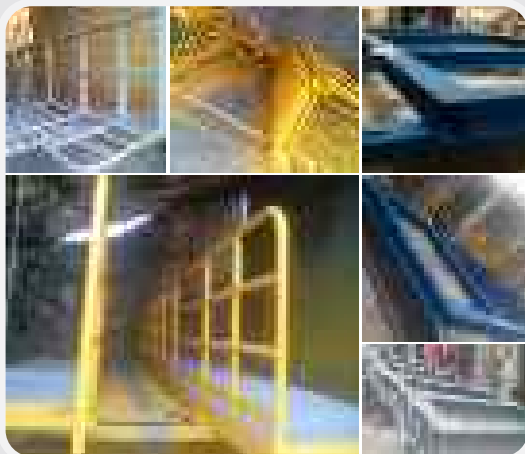
Scope of Work

1. Engineering: (IFC Drawing Review, Prepared Show Drawings, Weld Maping and As-Built.)
2. Material Procurement: Review of Engineering Drawings and Preparation of Sop Drawings.
 - Material Procurement. - Fabrication
 - NDT / Load Test Inspection - Blasting and Painting.
 - Loading out and deliver to Onne. E59

Client	CEONA /Marine Platforms
Status	100% - Completed
Timeline	27 Days (January 2015)

Project Title

West Jupiter ROV Project



Scope of Work

- 1) Engineering: (IFC Drawing Review, Raise Technical Query if any, Prepared Show Drawings, Weld Map Drawings, and As-Built Drawing.)
- 2) Procurement: (Material Procurement, Inspection and Verification.
- 3) Onshore Fabrication: (i) Fabrication of A-Frame and WINCH Grillage. (ii) Access Platforms (iii) Access Ladder (iv) Stair Access Platform (v) A-Frame & WINCH Frame Brackets (vi) NDT Inspection, blasting and painting (iii) Delivery at Quay Side FOT - Onne, (iv) Close Documentation.

Client	Total / Marine Platforms
Status	100% - Completed
Timeline	16 Days (January 2015)

Project Title

Fabrication of 4 Nos. GE Hose Reel & 4 Nos Spreader Bar



Scope of Work

1. Engineering: (IFC Drawing Review, Prepared Show Drawings, Weld Maping and As-Built.)
2. Material Procurement: Engineering Drawings Reviewed
 - Preparation of Shop Drawings.
 - Material Procurement.
 - Fabrication of the 4 Nos Hose Reel and 4 Nos Spreader bar.
 - NDT Inspection & Load Test
 - Blasting & Painting.
 - Loading Out and Deliver to FOT Onne.

Client	CHEVRON / Marine Platforms
Status	100% - Completed
Timeline	10 Days (October 2015)



Project Title ROV Tooling Basket



Scope of Work

1. Material Procurement, Fabrication of the ROV Blacket Frame and the ROV Tooling Basket. Inspection, blasting, painting and delivered at FOT, Onne.
2. Rigging Specification and Load Test for the ROV Tooling Basket Frame.
3. As-Built Drawings for the ROV Tooling Basket Frame.

Client CEONA /MPL

Status 100% - Completed

Timeline 9 Days (January 2016)

Project Title Fabrication of Cargo Skip Man Riding Basket, Waste Skip & Gas Rack



Scope of Work

1. Engineering: (IFC Drawing Review, Raise Technical Query if any, Prepared Show Drawings, Weld Map Drawings, and As-Built Drawing.)
2. Procurement: (Material Procurement, Inspection and Verification.
3. Onshore Fabrication: (i) Fabrication of Cargo Skip and Waste Skip. (ii) NDT Inspection, blasting and painting (iii) Delivery at Quay Side FOT - Onne, (iv) Close Documentation.

Client CHEVRON / Marine Platforms

Status 100% - Completed

Timeline 15 Days (July 2015)

Project Title H-LINK



Scope of Work

1. Engineering (IFC Drawing Review, Prepared Show Drawings, Weld Mapping and As-Built.)
2. Material Procurement
3. Onshore Fabrication of the Sub-Sea H-Link.
4. NDT Inspection, Padeye Pull Test, blasting, painting and delivery at Ladol - Lagos

Client ARIOSH / OCEAN INSTALLER LTD

Status 100% - Completed

Timeline 10 Days (February 2016)





Project Title **Spreader Bar**



Scope of Work

1. Engineering: (IFC Drawing Review, Raise Technical Query if any, Prepared Show Drawings, Weld Map Drawings, and As-Built Drawing).
2. Procurement: (Material Procurement, Inspection and Verification.
3. Onshore Fabrication: (Fabrication of 4 No. Spreader Beam
(ii) NDT Inspection, blasting and painting
(iii) Delivery at Ladol Yard - Lagos, (iv) Close Out Documentation.

Client	ARIOSH / Ocean Installer Ltd.
Status	100% - Completed
Timeline	15 Days (February 2016)

Project Title **CHUTE**



Scope of Work

- 1) Engineering: (IFC Drawing Review, Raise Technical Query if any, Prepared Show Drawings, Weld Map Drawings, and As-Built Drawing).
- 2) Procurement: (Material Procurement, Inspection and Verification.
- 3) Onshore Fabrication: (Fabrication of 4 No. Chutes
(ii) NDT Inspection, blasting and painting
(iii) Delivery at Ladol Yard - Lagos,
(iv) Close Out Documentation.

Client	ARIOSH / Ocean Installer Ltd.
Status	100% - Completed
Timeline	16 Days (March 2016)

Project Title **Manifold Grillage**



Scope of Work

1. Engineering: (IFC Drawing Review, Raise Technical Query if any, Prepared Show Drawings, Weld Map Drawings, and As-Built Drawing).
2. Procurement: (Material Procurement, Inspection and Verification.
3. Onshore Fabrication: (Fabrication of Manifold Grillage
(ii) NDT Inspection, blasting and painting
(iii) Delivery at Ladol Yard - Lagos,
(iv) Close Out Documentation.

Client	ARIOSH / Ocean Installer Ltd.
Status	100% - Completed
Timeline	5 Days (March 2016)



Project Title 8" AND 4" CLAMP



Scope of Work

- 1) Engineering: (IFC Drawing Review, Prepared Show Drawings, Weld Mapping and As-Built).
- 2) Material Procurement
- 3) Onshore Fabrication of the 2Nos 8" & 4" Clamp
- 4) NDT Inspection, Padeye Pull Test, blasting, painting and delivery at Ladol - Lagos

Client ARIOSH / Ocean Installer Ltd.

Status 100% - Completed

Timeline 8 Days (March 2016)

Project Title ROV Grillage (Jascon 55)



Scope of Work

1. Material Procurement, Fabrication of the ROV Grillage (A-Frame and WINCH Frame). Inspection, blasting, painting and delivered at FOT, Onne.
2. Rigging Specification and Load Test for the ROV A-Frame and WINCH Frame.
3. As-Built Drawings for the ROV Grillage.

Client MPN / MPL

Status 100% - Completed

Timeline 9 Days (April 2016)

Project Title AGBAMI Phase Three Project



Scope of Work

- 1) Engineering: (IFC Drawing Review, Prepared Show Drawings, Weld Mapping and As-Built.)
- 2) Material Procurement
- 3) Onshore Fabrication of the 1 No. Production Manifold Grillage, 2 Nos. Suction Pile Grillage.
- 4) NDT Inspection, Padeye Pull Test, Blasting, painting and delivery at FOT Onne
- 5) Sea-fastening of the fabricated items onboard African Inspiration

Client CHEVRON / Marine Platforms Ltd.

Status 100% - Completed

Timeline 25 Days (September 2017)



Project Title

BONGA SIL / LWI Project



Scope of Work

1. Engineering: (IFC Drawing Review, Prepared Show Drawings, Weld Mapping and As-Built).
2. Material Procurement
3. Onshore Fabrication of the 1No. Coil Tubing, 1 No.CROSS IWOCS 33 Grillage, 1 No. Moonpool Gillage, 1 No. LARS Lunning & Recovery system Grillage, 1 No. CROSS WRP Grillage , 1 No. Dive Spread Structural Grillage.
4. NDT Inspection, Padeye Pull Test,blasting, painting and delivery at FOT Onne.
5. Sea-fastening of the fabricated coil tubing onboard BOA Deep C.

Client SNEPCO / Marine Platforms Ltd.

Status 100% - Completed

Timeline 37 Days (January 2017)

Project Title

BOOR Engineering Support Project



Scope of Work

- 1) Material Procurement, Fabrication of the 1 No. Riser Recovery Frame(Chute), 2 No of Holdback padeyes, 2 No. Drip tray and 2No. Coral Stantion, 1 No. Diving LARS Grillage, 1 No. Snatch block padeye, 1No Hang Off Frame
- 2) Inspection, blasting, painting and delivered at FOT.
- 3) Sea-fastening of the above mentioned fabricated item onboard African Vision.
4. As-Built Drawings for the above mentioned fabricated items.

Client SNEPCO / Marine Platforms Ltd.

Status 100% - Completed

Timeline 28 Days (May 2017)

Project Title

BOOR Engineering Support Project



Scope of Work

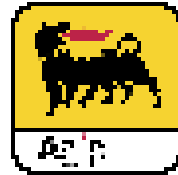
- 1) Material Procurement, Fabrication of the 1 No. Suffer Ladder
- 2) Inspection, blasting, painting and delivered at FOT.
- 3) Sea-fastening / Installation of the Suffer Ladder onboard MV PRIMUS.
- 4) As-Built Drawings for the above mentioned fabricated items.

Client SNEPCO / Marine Platforms Ltd.

Status 100% - Completed

Timeline 13 Days (September 2017)

 **Clientele/Partners**



BUMIARMADA



www.indexproltd.com



*“ We are privately owned,
led by active, experienced management
and driven by values
that underpin everything we do. ”*

IndexPro

An E P C I Company



IndexPro

An EPCI Company

Km 22, Port Harcourt-Aba Expressway, 
Port Harcourt, Rivers State.

info@indexproltd.com 

+234 (0) 814 469 1112 

+234 (0) 818 132 7474

[indexproltd](#)   

www.indexproltd.com 

